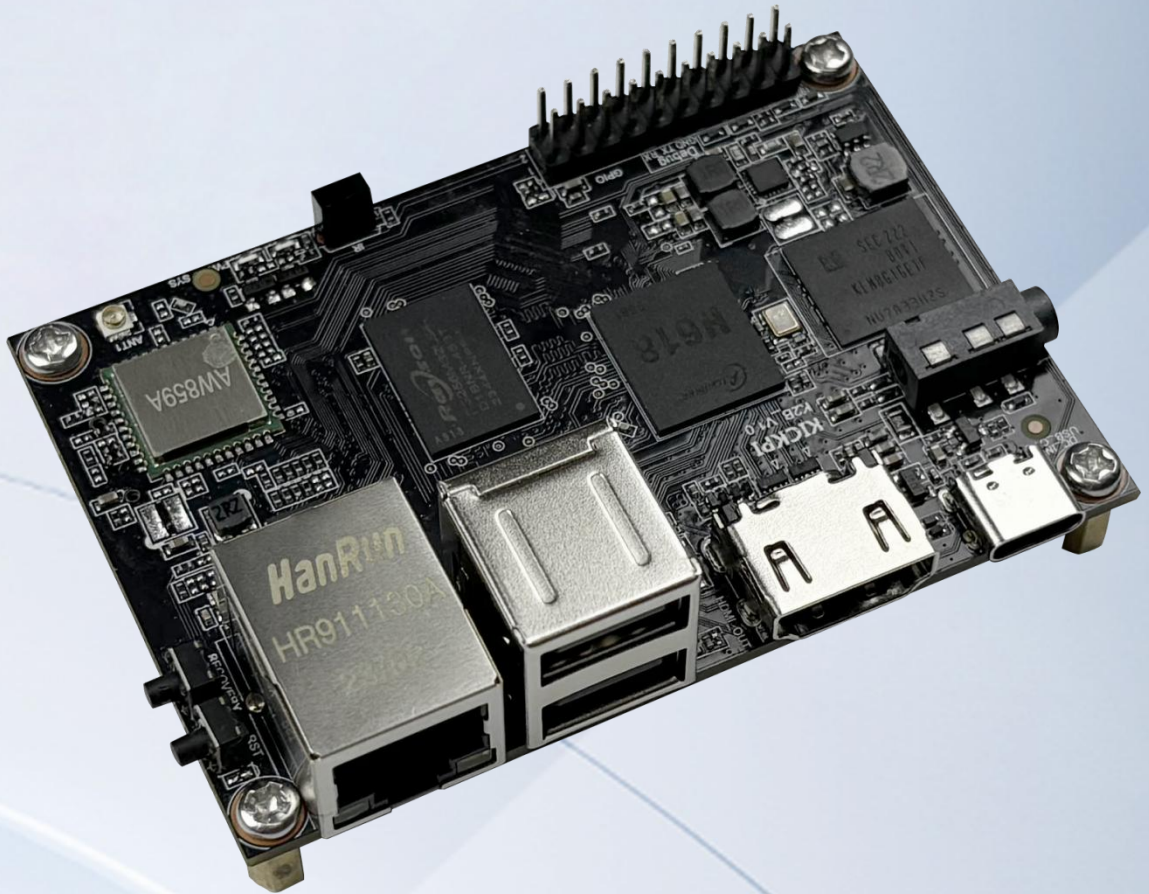


KICKPI



KICKPI-K2B

Allwinner H618

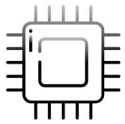
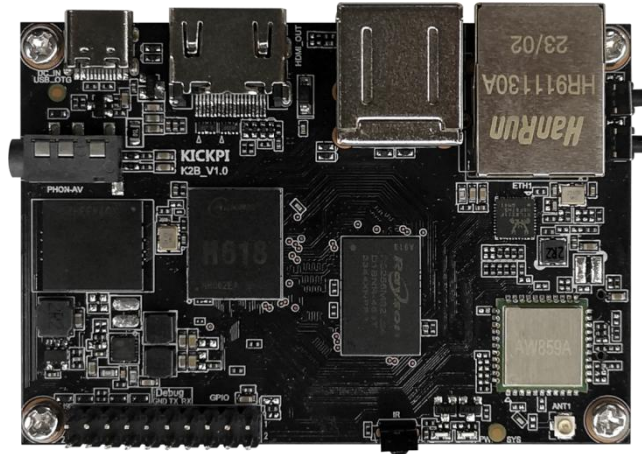
Product Specification

www.kickpi.com

Catalogue

1、 Product Features.....	2
2、 Interface Description.....	3
3、 Product Dimension.....	4
4、 Specifications.....	5
5、 PCB Dimension Diagram.....	6
6、 Interface Illustration.....	7
7、 Operating Ambient.....	8
8、 Notes.....	8
9、 Contact Us.....	9

1、Product Features



Quad-core 64-bit processor

Quad-core 64-bit Cortex-A53

processor Allwinner H618

Main frequency up to 2.0GHz, low power consumption and high performance



Powerful network communication function

Equipped with gigabit high-speed and large network interface, WIFI5 and Bluetooth 5.0 have stable communication and faster speed, suitable for various scene requirements.



4K video decoding

4K@60fps Video decoding

Supports HDMI display interface



Supports multiple system operations

Supports two major systems, Android 12.0 and Ubuntu 22.04, provides system call API reference code, and perfectly supports the development of upper level application apps and SDKs for customers.



Efficient secondary development and independent customization

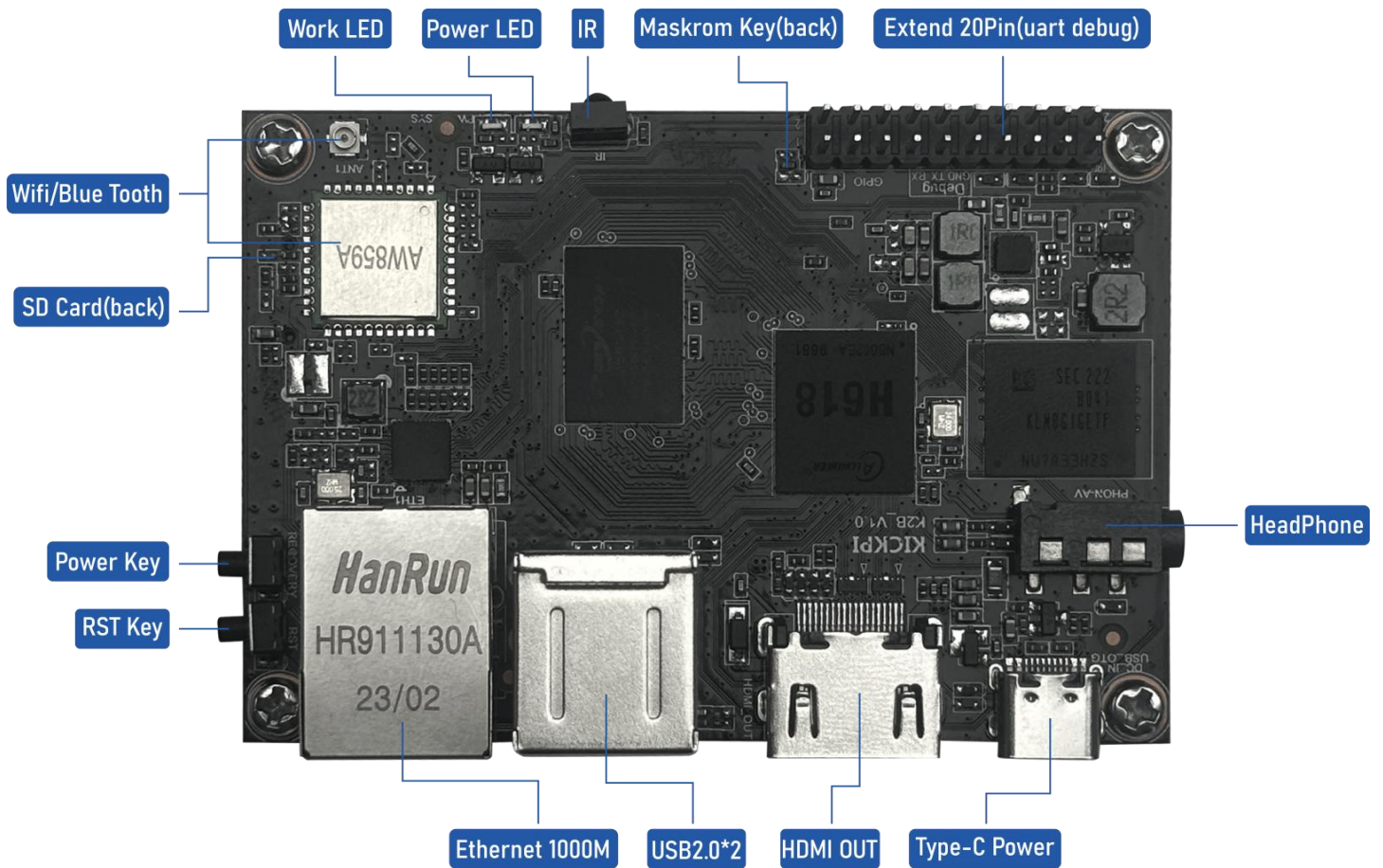
Embedded operating system underlying drivers, providing technical information and Engineer one-on-one service enables users to efficiently perform secondary opening
Develop and quickly build independent and controllable products



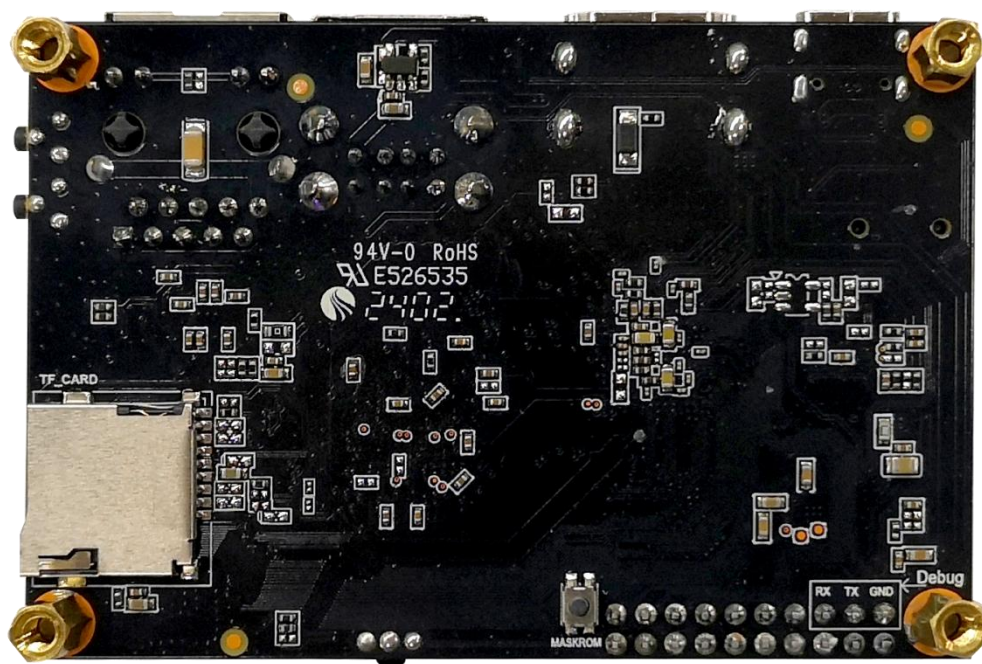
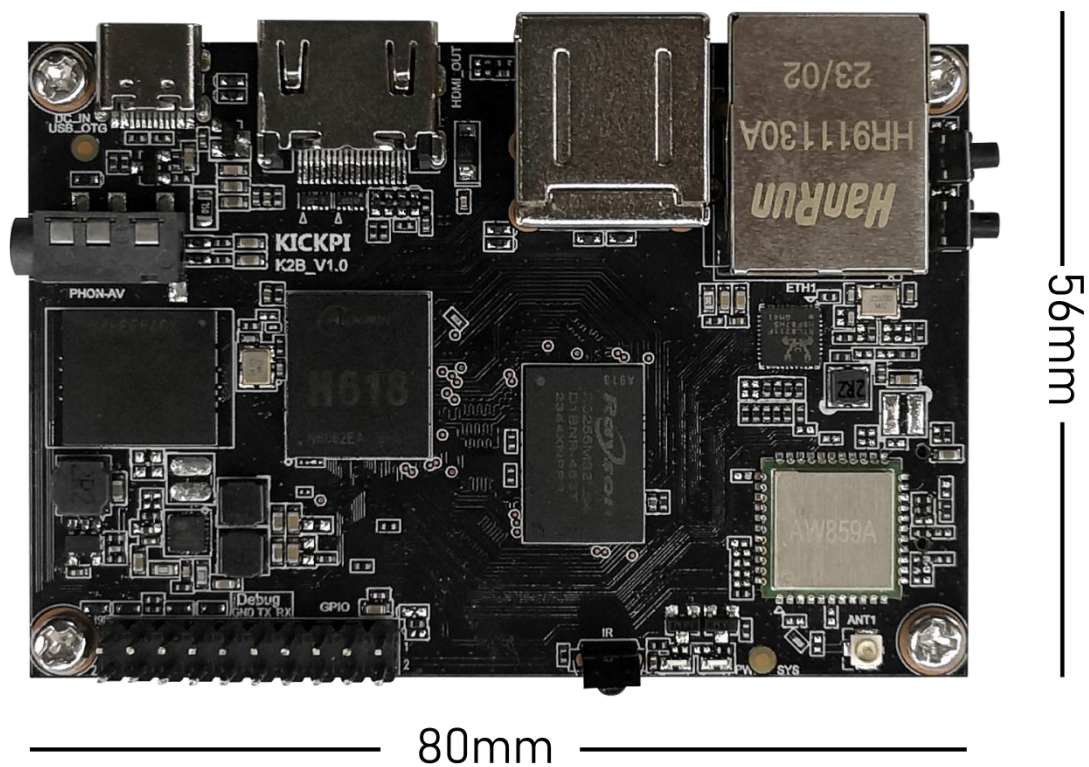
Widely applicable fields

Mainly targeting the customized market for set-top boxes, karaoke machines, video conferencing terminals, projectors, and other industries.

2、Interface Description



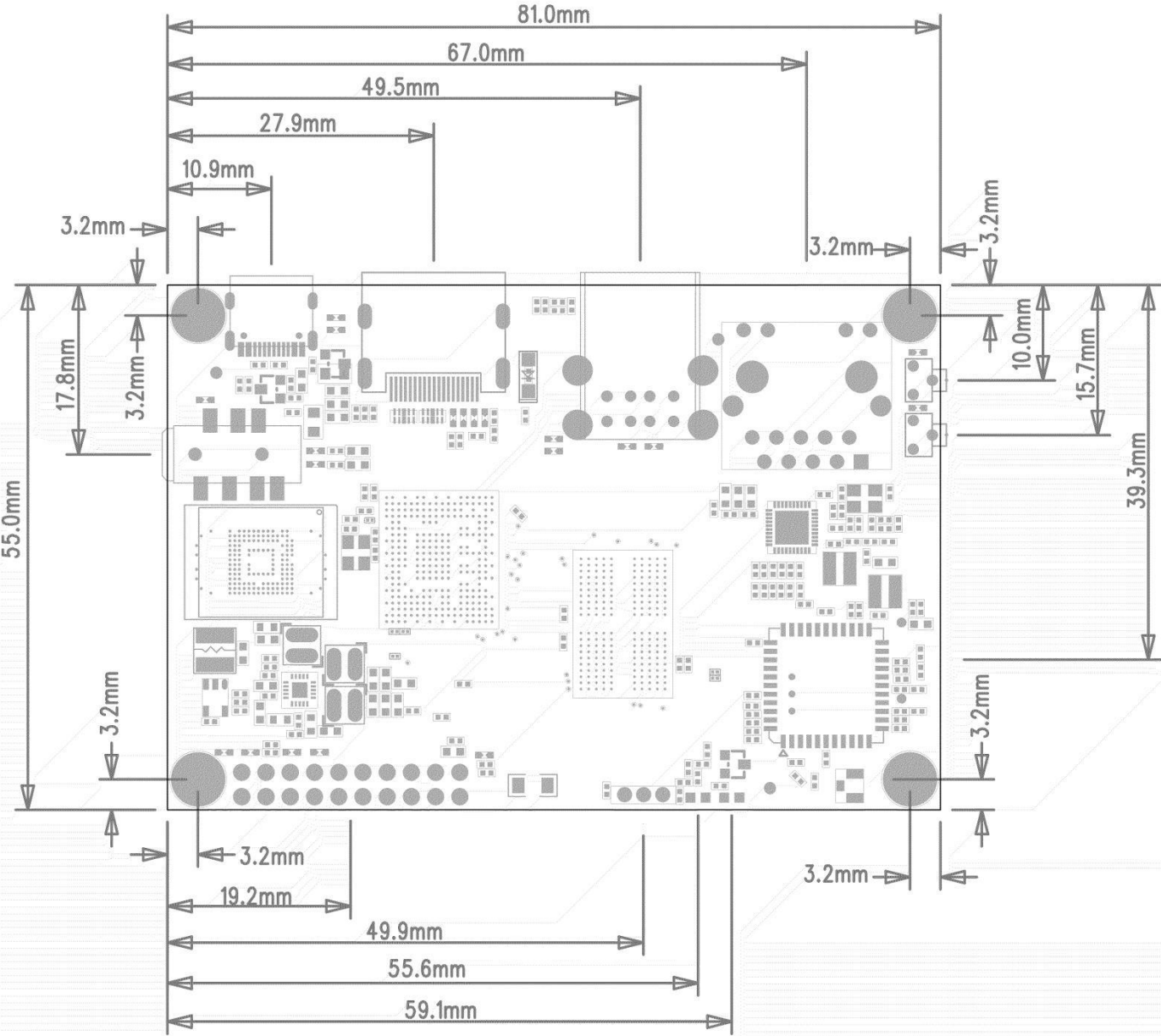
3、 Product Dimension



4、Specifications

Function	Main Parameter
Main Controller	Allwinner H618
CPU	Quad-core Cortex-A53 (up to 2.0GHz)
GPU	Mali G31 MP2
Memory	1G / 2G / 4G LPDDR4
Storage	8G / 16G / 32G eMMC
Systems Supported	Android 12.0 / Ubuntu 2204
Power Supply	Type-C 5V
LED Light	* Power LED * Work LED
USB HOST	USB 2.0 HOST X2
USB OTG	USB 2.0 OTG X1
Infraed Receiver	Y
Debug Serial Port	Y
Buttons	* Recovery KEY * RESET KEY * FEL KEY
Expansion Pins	Extend Pin Total 20Pin: * UART X2 * SPI X1 * PWM X4 * I2C X4 * I2S X1 * SPDIF X1 * USB X1
HDMI Display	X1 (up to 4K@60Hz)
SD-Card	Y
Ethernet	1000M X1
WIFI/Bluetooth	AW859

5、PCB Dimension Diagram



20Pin Definition



7、Operating Ambient

Operation temperature	0~80℃
Operating voltage	5V
Power dissipation(Bare board)	1W

8、Notes

- Please be careful not to operate the wiring with electricity during the assembly process.
- When coming into contact with the PCBA motherboard, it is necessary to wear static protection tools such as an electrostatic wristband (sleeve).
- When connecting external devices to the motherboard, it is necessary to strictly check the PIN definition and avoid any errors or reverse connections.
- During the installation and fixation process, avoid structural issues that may cause deformation of the board.
- When installing an LCD screen, be sure to pay attention to the selection of screen voltage and current, and pay attention to the position of the first pin.
- When installing an LCD screen, be sure to pay attention to the backlight voltage and whether the power supply is within the power range of the power adapter.
- When connecting external devices, pay attention to the level matching of external device data, the size of current, and other issues.
- When installing the serial port, pay attention to what type of serial port device is connected and whether the pins of TX and RX are reversed.
- Considering the overall power, what is the overall power and whether the power supply is sufficient after the entire device is connected.

9、Contact Us

	TEL	+86 15302644507
	E-mail	info@kickpi.com
	Address	Floor 11 Buiding 1, Esun Building, No642-2, Zhoushi Road, Hangcheng Street, Bao'an,Shenzhen, China
	Wiki Link	https://tanzhs-private-organization.gitbook.io/kickpi-book